



# YOUR TRAIN. YOUR WAY.

RIDE GUIDE | EFFECTIVE JUNE 2020



**SCAN FOR SCHEDULE**

# WELCOME ABOARD!

The Capitol Corridor is the nation's premier intercity passenger rail service. We take pride in delivering customer-focused, quality service, and we're dedicated to making your travel experience safe, comfortable, and convenient.

## Your Train. Your Way.

The Capitol Corridor operates daily trips along a 170-mile corridor between the Sierra Foothills and Silicon Valley.

## Schedules & Train Status

For the most current service information, scan the QR code on the front of this brochure or visit [capitolcorridor.org](https://capitolcorridor.org), where you can also sign up for service alerts, get real-time train status updates, and see our current deals and promotions.

# WE'LL TAKE YOU THERE!



## CAPITOL CORRIDOR ROUTE MAP

- STAFFED STATION
- UNSTAFFED STATION
- T TRANSFER STATION
- SPORTS & ENTERTAINMENT STADIUM
- AMUSEMENT PARK
- AIRPORT CONNECTION
- ■ ■ BUS CONNECTION
- ■ ■ FERRY CONNECTION



Capitol Corridor's unreserved train service provides the greatest flexibility and value to our passengers. Missed your train? Need to reschedule your trip? No problem. Tickets are valid for travel on any Capitol Corridor train up to one (1) year from the original date of travel. A new reservation is not required, and you can use your existing digital or printed ticket; however, if the alternate travel itinerary is more expensive, the higher fare will be charged. Tickets are non-transferable, and restrictions apply for tickets purchased using a discount or promotional offer.

## Where to Buy



CapitolCorridor.org



Amtrak App



Quik-Trak Machine

## Ticket Options

One-Way

Round-Trip

Monthly

10-Ride

Student 6-Ride

## Deals & Promotions

Save on travel fares by taking advantage of our everyday deals and promotional offers. Visit [capitolcorridor.org/deals](https://capitolcorridor.org/deals).

## California Everyday Discounts

Seniors (age 62+), students, active military, veterans, and passengers with disability can save 15%. Promo codes must be used at time of purchase, and restrictions apply. Children ages 2-12 ride half-price every day with a paid adult, and infants under the age of two ride free. For more information, visit [capitolcorridor.org/deals](https://capitolcorridor.org/deals).

## Group Travel

Plan your next business, social, and student/youth group outing of 20 or more by visiting [capitolcorridor.org/group-travel](https://capitolcorridor.org/group-travel).

## Need Help with Tickets?

For information on refunds, ticket changes, or lost tickets, please visit our Help Center at [capitolcorridor.org/contact](https://capitolcorridor.org/contact) or call 877-9-RIDECC (1-877-974-3322).



From departure to arrival, the Capitol Corridor makes your trip convenient, comfortable, and enjoyable.

### Carry-on Luggage

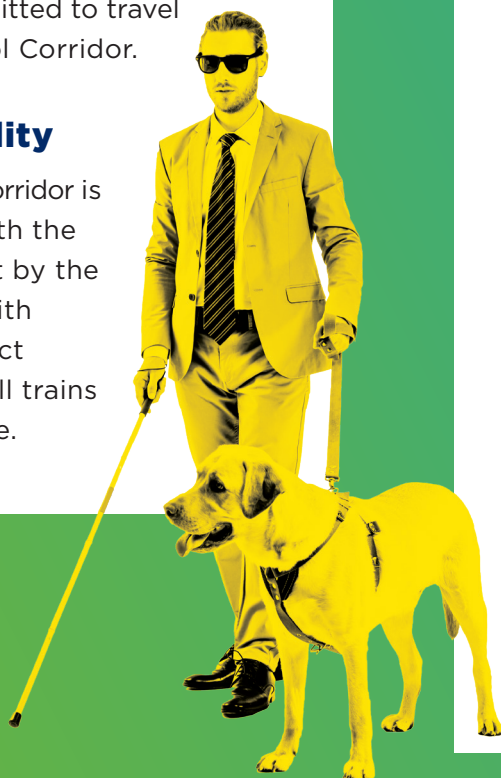
Passengers are limited to two (2) pieces of carry-on luggage, no more than 50 lbs., not exceeding 28" x 22" x 14". Bags should be kept clear of aisles and tagged with your name and address. There is no checked baggage service available.

### Animals

With the exception of certified service animals, there are no animals permitted to travel on the Capitol Corridor.

### Accessibility

The Capitol Corridor is compliant with the standards set by the Americans with Disabilities Act (ADA), and all trains are accessible.

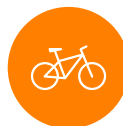


### Traveling with Your Bike

Whether you take your bike on the train or park it at the station, we've got you covered. For full details and tips for traveling with your bike, visit [capitolcorridor.org/bicycles](https://capitolcorridor.org/bicycles).



Station Bike  
eLockers



Onboard  
Bike Storage



Bikes  
on Buses

- ❑ **Arrive 15-30 minutes early** to park your car, lock your bike, purchase tickets, or for assistance getting to the platform.
- ❑ **Use caution** by staying behind the yellow line, walking, keeping children close, and watching for moving vehicles.
- ❑ **Never** board or exit a moving train.
- ❑ **Allow enough time** to board and exit trains, as station stops can be brief.
- ❑ **Need assistance?** Ask the conductor; they are there to help!



## Spacious Seating

Enjoy small group seating with tables or relax in seats that are equipped with a fold-down tray, footrests, and a reading light for added comfort and convenience.

## Food & Beverages

Food, snacks, alcoholic and non-alcoholic beverages are available in the



Café Car. Check out our current menu offerings here:

[capitolcorridor.org/cafe-car](https://capitolcorridor.org/cafe-car).

**Please note:** You may bring your own food on board and consume it at your seat; however, you may not eat personal food in the Café Car. All alcoholic beverages must be purchased in the Café Car.

## Wi-Fi & Charging Outlets

Complimentary Wi-Fi and electrical outlets are available on all trains. Be productive, or simply sit back and have some fun while using any Wi-Fi enabled device. Our Wi-Fi page includes useful service information such as train status and schedules, as well as links to current promotions and local content.

## Quiet Cars

Select weekday morning trains are designated as Quiet Cars allowing you to travel in an environment free of talking or noise from electronic devices.

## Our Menu Includes:



Salads, wraps, sandwiches & more



Coffee, tea, soda & other refreshments



Snacks, alcoholic beverages & more



## Transit Transfer Program

We partner with many connecting transit agencies along our route by providing free transfers from Capitol Corridor trains to local transit services. To view all of our participating transit partners, visit [capitolcorridor.org/connections](https://capitolcorridor.org/connections).

## First & Last-Mile Solutions

The Capitol Corridor service is well integrated with a number of transit connections providing many car-free options for getting around Northern California and its top destinations. Find the connection that works best for your trip: [capitolcorridor.org/connections](https://capitolcorridor.org/connections).

## Ways to Connect



Bus



Ferry



Personal



## One Ticket, One Seat

No bags or feet on seats and no reserving empty seats.

## See Something, Say Something

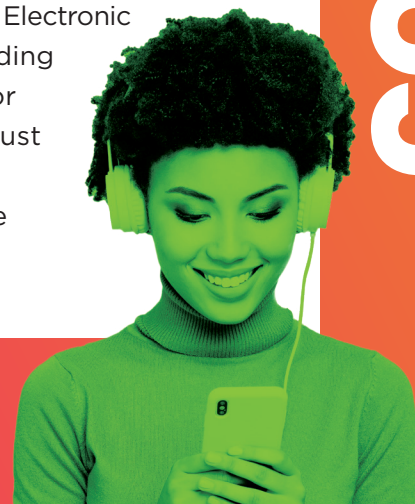
Report any unmarked or unattended items or suspicious activity immediately to the conductor, station agent, or train crew. In the event of an emergency, notify a member of the train crew, contact the Amtrak Police Department (call **800-331-0008** or text **APD11**), or call **911**.

## No Smoking

Smoking is prohibited in the station, on the station platform, and on the train.

## Be Considerate

Refrain from engaging in loud and/or offensive conversation with fellow passengers or on your mobile phone. Electronic devices, including headphones or earphones, must not emit any sound audible to others.





## Capitol Corridor Stations

- Auburn-Conheim (ARN)
- Rocklin (RLN)
- Roseville (RSV)
- Sacramento (SAC)
- Davis (DAV)
- Fairfield-Vacaville Hannigan (FFV)
- Suisun-Fairfield (SUI)
- Martinez (MTZ)
- Richmond (RIC)
- Berkeley (BKY)
- Emeryville (EMY)
- Oakland Jack London (OKJ)
- Oakland Coliseum (OAC)
- Hayward (HAY)
- Fremont-Centerville (FMT)
- Santa Clara-Great America (GAC)
- Santa Clara-University (SCC)
- San Jose-Diridon (SJC)

## Lost & Found

To report and recover a lost item, visit [capitolcorridor.org/contact](https://capitolcorridor.org/contact).

## Passenger Identification

Passengers 16 years and older must possess valid photo identification when purchasing tickets and while traveling.

## Contact Us

1.877.9.RIDECC (1.877.974.3322)

TDD 510.839.2220

[capitolcorridor.org](https://capitolcorridor.org)



@CapitolCorridor